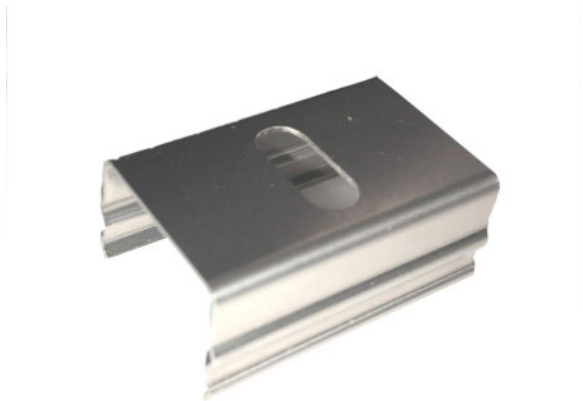


## LR FINESSE METAL CLIP

LINEARlight Rigid FINESSE – Accessories |



### Produktfördelar

- Large set of accessories for installation
- Recessed kit for installation on false ceiling
- Wall arms for holding fixture in place
- Metal clip for surface installation
- Kit for pendant installation
- Indoor and outdoor jumper for daisy chain connection
- Indoor and outdoor power cable: 5 m
- Outdoor male and female terminals for ad hoc cabling

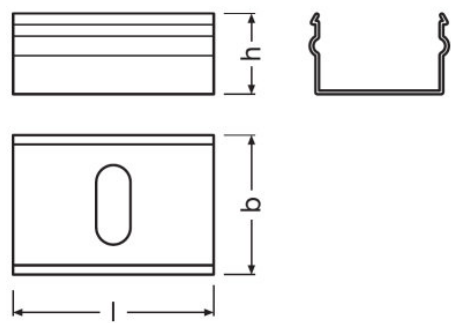


Tekniska data

Elektriska data

Strömtyp	Direkt ström (DC)
----------	-------------------

Mått



produktvikt	500 g
Längd	30 mm
Bredd	200 mm
Höjd	130 mm

Logistikdata

Statistiskt varunummer	73269098900
------------------------	-------------

Environmental information

Information according Art. 33 of EU Regulation (EC) 1907/2006 (REACH)	
Date of Declaration	19-01-2022
Primary Article Identifier	4052899618107
Declaration No. in SCIP database	In work

Ecodesign regulation information:

- This product is considered to be a "containing product" in the sense of Regulations (EU) 2019/2020 and (EU) 2019/2015.
- Tolerances of the reported values, are according to LED Modules Performance standard IEC/EN 62717.
- In general, the replacement of the contained light sources without permanent damage to the product with the use of common available tools is possible in the final application when they can be dismantled from the installation environment and substituted for the necessary number of light sources restoring its full electrical/mechanical/thermal/optical functionality by means of a professional installer. In the contrary, and limited to the LINEARlight Flex Diffuse, LINEARlight Rigid Finesse, GINO LED Flex Diffuse and LUMINENT Milky product families, the contained light source is an integrated part of the containing product and its removal can only be done by causing a permanent damage to the containing product due to its tight mechanical, electrical, optical, thermal interaction and/or environmental protection with or from the containing product. Therefore, a replacement of the light source with the use of common available tools is not justified.
- Dismantling of light sources from containing products at end of life: Containing products with light sources which are scalable in length can be cut to the length of the contained light source and if applicable mechanically detached from protective and/or optical covers. Containing products shall be separated from building material and/or from other additional mounting accessories by means of a professional installer. Separate control gear and light sources must be disposed of at certified disposal companies in accordance with Directive 2012/19/EU (WEEE) in the EU and with Waste Electrical and Electronic Equipment (WEEE) Regulations 2013 in the UK. For this purpose, collection points for recycling centres and take-back systems (CRSO) are available from retailers or private disposal companies, which accept separate control gear and light sources free of charge. In this way, raw materials are conserved and materials are recycled.

Logistiska data

Produktnummer	Produktbeskrivning	Förpackningsenhet (Styck/Enhet)	Dimensioner (längd x bredd x höjd)	Volym	Bruttovikt
4052899618107	LR FINESSE METAL CLIP	Transportförpackning 100	180 mm x 130 mm x 120 mm	2.81 dm <sup>3</sup>	580.00 g

Produktkoden gäller minsta tillåtna beställningskvantitet. En transportförpackning kan innehålla en eller flera produkter. Vid orderläggning, vänligen ange en eller flera transportförpackningar.

Friskrivningsklausul

Subject to change without notice. Errors and omission excepted. Always make sure to use the most recent release.