

LEDinspect TWIST250

Inspectionlights



Multi-Angle Flex & Twist

High flexibility and diverse adjustment possibilities thanks to multi angle positioning



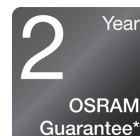
250 Lumen

2 light functions: Up to 250lm -high Up to 125lm -low



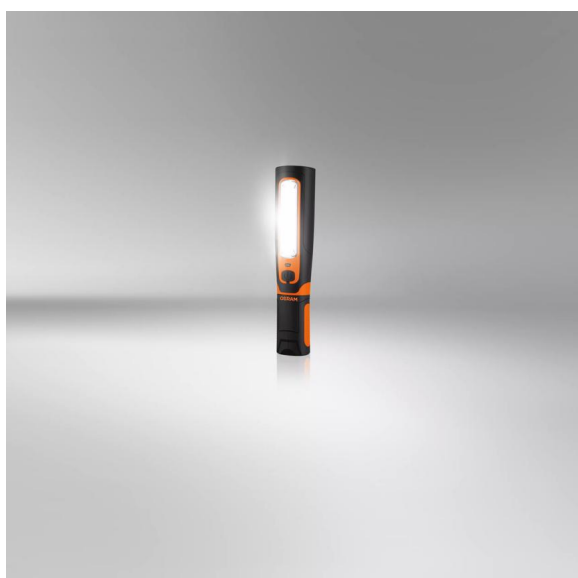
2in1

Inspectionlight & Torchlight function



2-year-OSRAM guarantee*

Systematic quality assurance measures underpin the premium workmanship and functionality of our products. Innovative technology and excellent quality really pay dividends for our customers.



Light is versatile




With the TWIST 250 you have the possibility to easily control the direction of the light beam. A light output of up to 250 lumens and a colour temperature of up to 6000K, make the TWIST 250 ideal for use in workshops and beyond. Lightweight, robust and with a 360° rotation and a 180° grid function, it is an optimal tool for targeted lighting. Mains charger included. In addition, OSRAM provides a 2-year guarantee on this product*

Product family datasheet

Technical data

	Product information	General Product Information	Electrical Data	
Product description	Application (Category and Product specific)	Global order reference	Nominal wattage	Nominal voltage
INSPECTION LAMP	LED inspection lights	LEDIL412	8 W	3.7 V
	Photometric Data			Physical Attributes & Dimensions
Product description	Color temperature	Nominal luminous flux	Light color LED	Product weight
INSPECTION LAMP	6000 K	250 lm	White	488.00 g
				LED module information
Product description	Length	Width	Height	Number of LEDs per module
INSPECTION LAMP	243.0 mm	50.0 mm	44.0 mm	2
	Colors & materials	Lifetime Data	Additional product data	
Product description	Base color	Guarantee	Type of Battery	Number of included batteries
INSPECTION LAMP	Black / Orange	2 years	Rechargeable	1
		Capabilities	Certificates & standards	Logistical data
Product description	Scope of battery	Technology	IK Class	Watt hour per battery
INSPECTION LAMP	Yes	LED	IK09	8.14
	Environmental & Regulatory Information Information according Art. 33 of EU Regulation (EC) 1907/2006 (REACH)			
Product description	Candidate list substance 1	CAS No. of substance 1	Safe use instruction	Declaration no. in SCIP database
INSPECTION LAMP	Lead	7439-92-1	The identification of the Candidate List substance is sufficient to allow safe use of the article.	c20eb463-09bd-4c1e-8bd5-69238c3db62e

Download Data

File	
	User instruction LEDinspect TWIST 250
	User instruction GPRS_Safety symbols instructions
	Movie application LEDinspect Inspection Lights Trailer

Legal advice

Application advice:

For more detailed application information and graphics please see product datasheet and user instruction.*for precise conditions please refer to:

www.osram.com/am-guarantee

Application advice

For more detailed application information and graphics please see product datasheet.

Disclaimer

Subject to change without notice. Errors and omission excepted. Always make sure to use the most recent release.